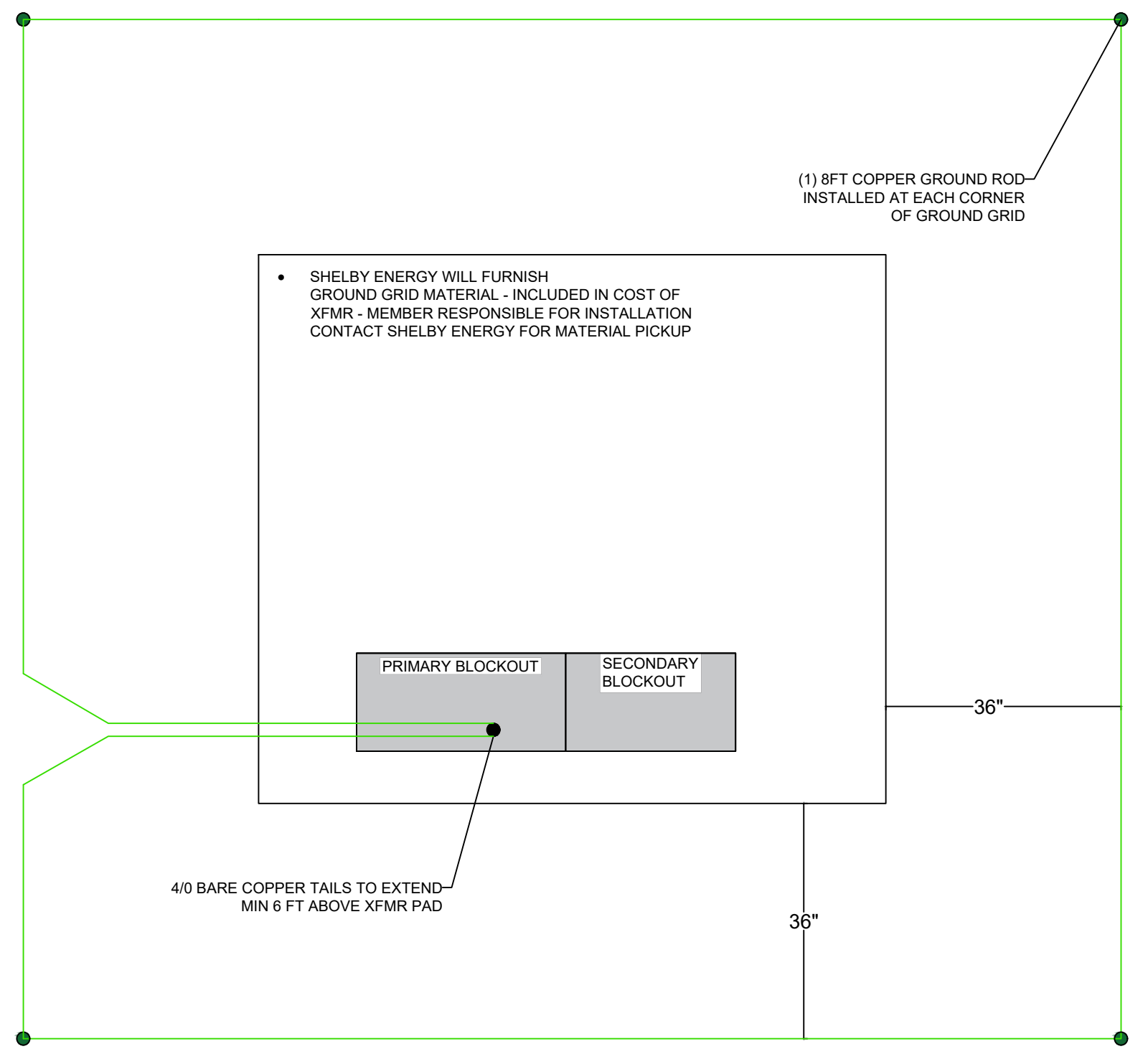
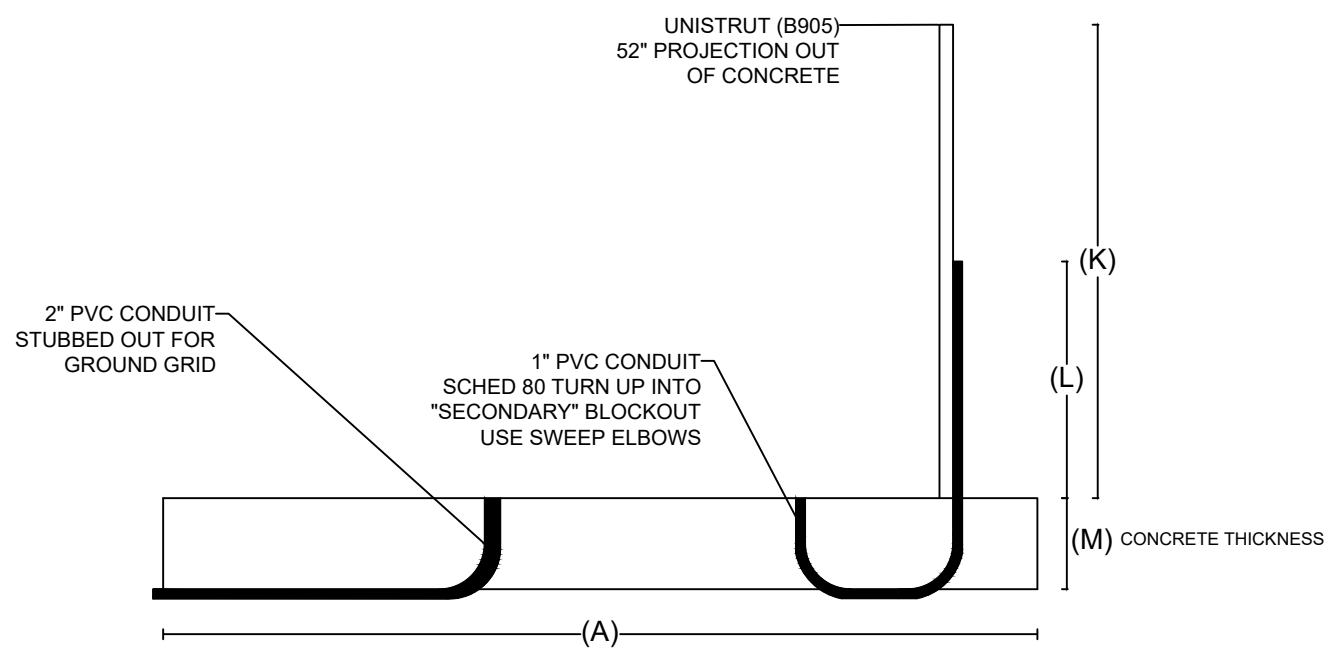
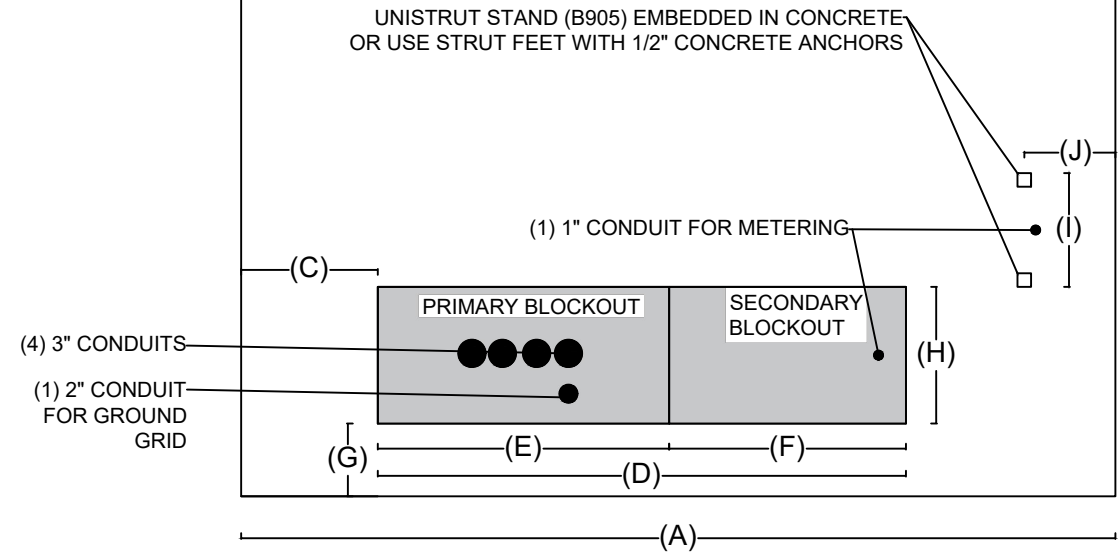


KVA RATING	A	B	C	D	E	F	G	H	I	J	K	L	M
45-500	96"	84"	15"	58"	32"	26"	8"	15"	11"	10"	52"	26"	10"
750-3000	120"	126"	12"	64"	38"	26"	8"	17"	11"	10"	52"	26"	10"

- FIBER REINFORCED CONCRETE
- COMPACTED DENSE GRADE LIMESTONE FILL
- #5 REBAR 10" ON CENTER
- CONCRETE STRENGTH (Fc) 3000 PSI
- CONTACT SHELBY ENERGY PRIOR TO POURING CONCRETE FOR INSPECTION



- ALL PRIMARY CONDUITS SHALL BE (4) 3" CONDUITS - ONE BEING SPARE
- ALL PVC SHALL BE SCHED 40 IN GROUND
- ALL ELBOWS SHALL BE SCHED 80 LONG SWEEP ELBOWS 36" RADIUS
- ALL CONDUITS SHALL HAVE PULL STRING INSTALLED
- ALL CONDUIT INSTALLATION AND TRENCHING SHALL BE INSPECTED BY SHELBY ENERGY PRIOR TO BACKFILLING - CONTACT DISPATCH @ 502-633-0363 AND SCHEDULE 24HOURS IN ADVANCE
- CONTACT SHELBY ENERGY ENGINEERING TO INSPECT XFMR PAD PRIOR TO POURING CONCRETE

PADMOUNT TRANSFORMER SPECIFICATIONS

DESIGNED BY:	DATE:	COMMENTS:
SHELBY ENERGY	3/12/2024	

