



# Shelby Energy Cooperative

A Touchstone Energy® Cooperative



February 2018

## Made in Kentucky

### *Co-ops power the manufacturing engine*

Kentucky has long been known for thoroughbred horses, bourbon whiskey, and fried chicken, but the commonwealth is making its economic mark in much broader strokes these days. Shelby Energy and other cooperatives across Kentucky are playing a key role in Kentucky's fast developing economy.

Using leading-edge recruitment tools, Shelby Energy and Kentucky's Touchstone Energy Cooperatives have helped our state emerge as a leader in manufacturing. Nearly 4,500 manufacturers, representing 250,000 jobs, operate here. One in every six working Kentuckians is employed at a manufacturing facility.

The state's ideal location, skilled workforce and low business costs—including some of the nation's best electric rates—make it a great place for manufacturing companies to produce and ship products to every corner of the globe.

During the last three years, Shelby Energy and Kentucky's Touchstone Energy Cooperatives have recruited companies that have invested \$2.3 billion and created more than 7,000 jobs. In 2016 alone, 222 manufacturers announced facility location or expansion projects, reports the Cabinet for Economic Development.

Today, thousands of well-known products are made in Kentucky, including many with cooperative ties. Locally, Shelby Energy supplies electricity for manufacturers such as Martinrea Stamping, Katayama American Company, and Bemis Company, Inc.

Shelby Energy and Kentucky's Touchstone Energy Cooperatives are also using high-tech tools to help draw employers to high-profile Kentucky sites.

One of those sites is a 400-acre Norfolk Southern Corporation property, located adjacent to Interstate 64

in Shelbyville, and features locations available to commercial and industrial businesses looking to expand or relocate. The property features ready accessibility to rail and interstate transportation, as well as the nearby Louisville International Airport and UPS Centennial Hub.

We are seeing an expansion of advanced manufacturing all across the state. Today, Kentucky has 75 aerospace plants employing nearly 17,000 people, and their exports have increased 183 percent in the last five years alone.

Regardless of size, industry or location, each new company we recruit plays a key role in creating jobs, sparking innovation and furthering Kentucky's economy. Shelby Energy is doing its part to help businesses in our service area succeed because a diverse, healthy economy provides a better quality of life for us all.

Made In Kentucky

Here are just a few of the many products made in Kentucky:

- Post-it Notes, 3M, Cynthia
- Fork lifts, NACCO Materials, Berea
- Bicycle card decks, United States Playing Card Co., Erlanger
- Steel, Nucor Steel Gallatin, Ghent
- Food packages, Sabert Corp., Shepherdsville
- Aircraft parts, Phoenix Products, McKee
- Auto glass, AP Technoglass, Elizabethtown and Florence
- Military clothing, SEKRI, Corbin, Cumberland and Paris

# Shelby Energy Scholarships 2018

## BOARD OF DIRECTORS

Ashley Chilton • Chairman  
Pat Hargadon • Vice Chairman  
Roger Taylor Jr. • Secretary-Treasurer  
R. Wayne Stratton • Diana Arnold  
Jeff Joyce  
Debra J. Martin • President & CEO

## Shelbyville Office Hours

Monday – Friday:

7:30 a.m. – 4:30 p.m.

Mailing Address: 620 Old Finchville Road  
Shelbyville, KY 40065-1714  
(502) 633-4420

## Remote Payment Centers

Henry County Supply

Monday, Wednesday, Friday: 8 a.m. – 5 p.m.

Tuesday, Thursday: 8 a.m. – 6 p.m.

Saturday: 8 a.m. – 3 p.m.

Riverside

Smoker's Friendly

Monday - Thursday: 8:00 a.m. – 6:30 p.m.

Friday and Saturday: 8:00 a.m. – 7:30 p.m.

Sunday: 9:30 a.m. – 5:30 p.m.

Poppy's General Store

24 Equity Drive, Bedford, KY 40006

(502) 663-6028

Mon. – Sat. 5:30 a.m. – 9:00 p.m.

Sunday 12:00 p.m. – 9:00 p.m.

For information or to report an outage

**1-800-292-6585**

Visit our website at:

[www.shelbyenergy.com](http://www.shelbyenergy.com)

Email: [shelbyenergy@shelbyenergy.com](mailto:shelbyenergy@shelbyenergy.com)

## Online Bill Pay:

Access your Shelby Energy account

through our website at

[www.shelbyenergy.com](http://www.shelbyenergy.com).

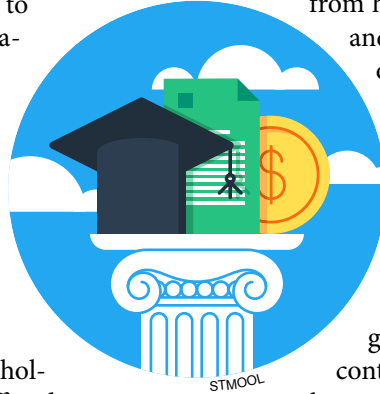
Click on "Online Bill Pay" to view your electric bill and make payments by debit card, e-check, Visa, or Mastercard.

All members signing up for new service with Shelby Energy receive a short survey. Members who return the completed survey to Shelby Energy are automatically eligible to win a one-time \$20 credit on their electric bill. Each month, one name is drawn and a lucky Shelby Energy member receives a bill credit on their next statement.

The new member survey winner for November 2017 is Emily McDowell of Shelbyville, KY.



Each year, Shelby Energy Cooperative searches for outstanding high school students to represent the cooperative in our Scholarship Program. Six \$1,000 scholarships are awarded based on grade-point average, ACT scores, school and community involvement, and financial need. One \$1,000 scholarship will also be offered for any student who is interested in



pursuing an electrical line technician career. Applications are now available from high school counselors, and at the Shelby Energy office. Students may also visit [www.shelbyenergy.com](http://www.shelbyenergy.com) to print an application. The application deadline is March 16, 2018. For more information please see your guidance counselor or contact Laurie Gutermuth at [laurie@shelbyenergy.com](mailto:laurie@shelbyenergy.com) or (800) 292-6585.

## Do not use space heaters without safety precautions

Every year, families experience tragedies caused by space heaters, when attempting to stay warm during those frigid winter nights.

Unfortunately, supplemental heating equipment like electronic or kerosene space heaters are the leading cause of home fires during the winter. Please use them with great care to avoid endangering the lives of those in your home.

To prevent overheating, cords should be plugged directly into a wall outlet and not into an extension cord.

It's a good idea to keep three feet of space clear, all around a space heater. The heater should also include a tip-over safety switch.

When you leave the room or go to sleep, turn off the space heater. You'll be much safer piling on extra blankets, and you can avoid the extra cost of running the equipment.

If you have pets or children, be



especially cautious to keep them away from the equipment. Even the slightest contact with a heating coil or element can cause a severe burn.

Shelby Energy wants to keep you and your family safe this winter and throughout the year.



# Washington, D.C. Youth Tour 2018

For students interested in a tour of Washington, D.C., it can be as easy as writing an essay. High school juniors are eligible to apply for the Kentucky Rural Electric Washington Youth Tour, and Shelby Energy will sponsor up to three students from our service territory for the fun and educational trip. This year's Washington, D.C. Youth Tour dates are June 8–15, 2018.

“We are interested in helping young leaders develop. This trip is an excellent opportunity for students to see our nation's leaders at work, and learn how electric cooperatives make a contribution,” says Debbie Martin, Shelby Energy's president and CEO. The chosen students will spend a week touring Gettysburg, the Smithsonian Institution, Arlington National Cemetery, the FBI building, the National Zoo, Library of Congress, U.S. Capitol, the White House, the Kennedy Center and much more. The trip will also include a visit to Kentucky's congressional delegation.

Beginning the first week of February, students can contact their guidance counselor or our Shelby Energy office for a Washington Youth Tour application. Students can also visit [www.shelbyenergy.com](http://www.shelbyenergy.com) to print out an application. The deadline for all applications to be turned in is March 9, 2018.

For more information please see your guidance counselor or contact Laurie Gutermuth at [laurie@shelbyenergy.com](mailto:laurie@shelbyenergy.com) or (800) 292-6585. Don't miss out on this great opportunity!

## Prepay Service


*A pay-as-you-go energy solution from Shelby Energy*

Would it be easier for you to make weekly or bi-weekly payments rather than one large payment each month? If so, Shelby Energy's new prepay program could be right for you.

**With prepay, members purchase electricity before they use it. It allows members to say:**

- Goodbye to Deposits
- Goodbye to Late fees
- Goodbye to Disconnect fees
- Goodbye to Reconnect fees

Contact us for more information.

 Shelby Energy Cooperative

A Touchstone Energy Cooperative 

800-292-6585 • [www.shelbyenergy.com](http://www.shelbyenergy.com)

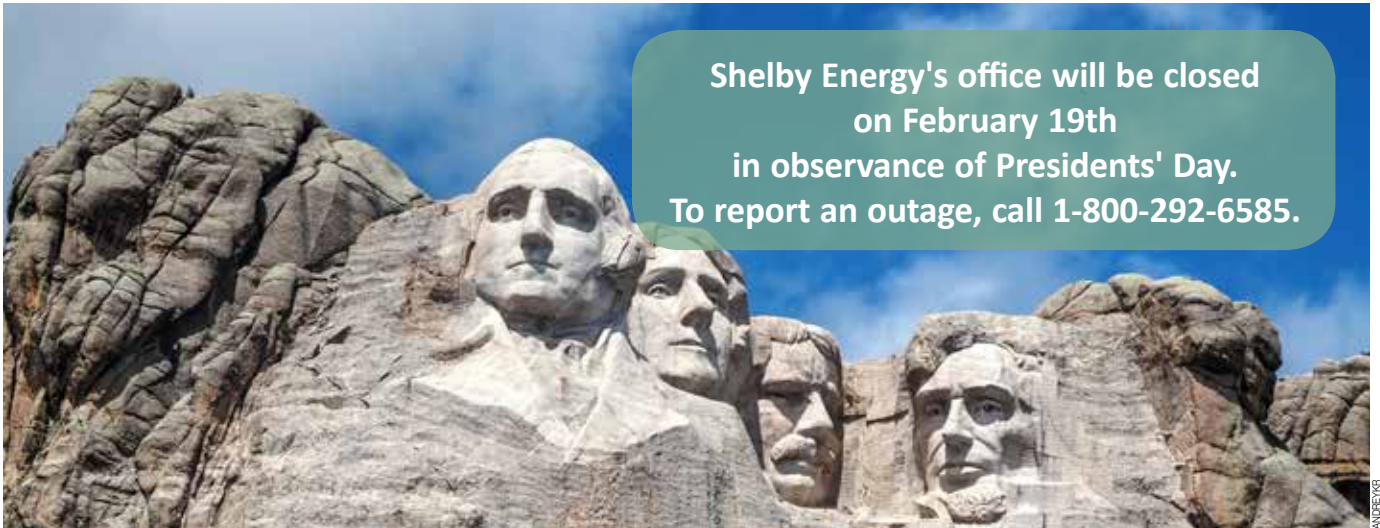
# Shelby Energy members can now apply for electric service on our website!

APPLY  
online NOW

Click here >>

Just go to [www.shelbyenergy.com](http://www.shelbyenergy.com) and click on the "Apply for Service" button on the left side of our home page. You can also request a yard light repair, an energy audit, and other miscellaneous service requests. For more information, please contact a Shelby Energy representative at 1-800-292-6585.

Shelby Energy's office will be closed  
on February 19th  
in observance of Presidents' Day.  
To report an outage, call 1-800-292-6585.




ANDREYKO

## Winter storms

**KENTUCKY WEATHER CAN BE UNPREDICTABLE.  
ARE YOU PREPARED BEFORE A STORM HITS?**



- Make a storm preparedness kit that includes these basic supplies — bottled water, non-perishable food, emergency blankets, first aid kit/medicine, flashlight, battery-operated or hand-crank radio, extra batteries and toiletries.
- Keep your refrigerator and freezer doors closed as much as possible to keep food safe and cold.
- If you see downed power lines, do not touch them. Call 911.

 Shelby Energy Cooperative

A Touchstone Energy® Cooperative 